
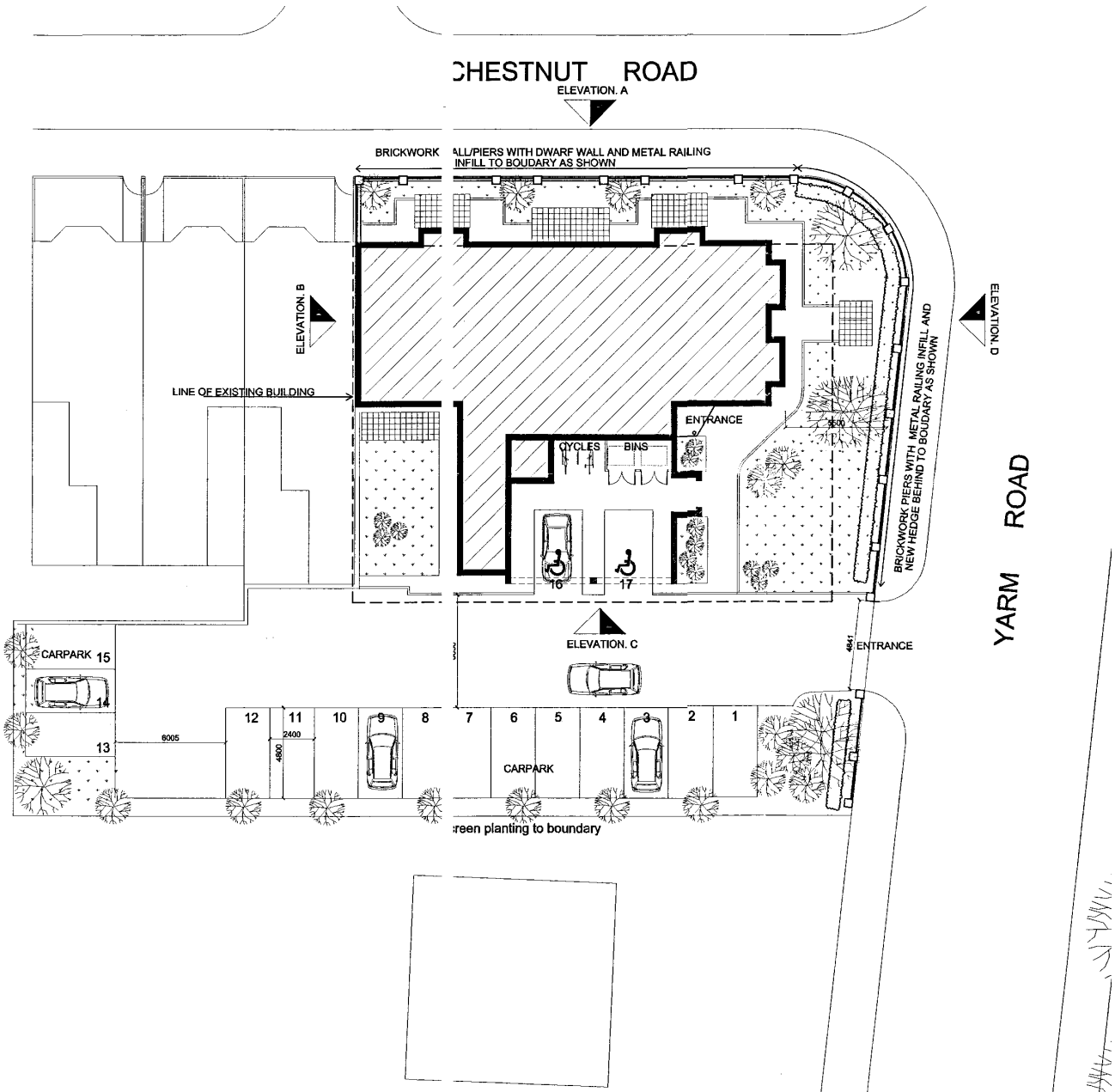


Site Location Plan



 <p>Stockton-on-Tees BOROUGH COUNCIL</p>	<p>This map is reproduced from Ordnance Survey material with the permission of Ordnance Survey on behalf of the Controller of Her Majesty's Stationary Office. © Crown Copyright. Unauthorised reproduction infringes Crown Copyright and may lead to prosecution or civil proceedings. Stockton-on-Tees Borough Council 100023297 2006</p>
<p>Carol Straughan Head of Planning Gloucester House, Church Road, Stockton-on-Tees, TS18 1TW Tel (01642) 526022 Fax (01642) 526048</p>	<p>Title Stockton Borough</p>
<p>Date</p>	<p>Scale 1:1250</p>

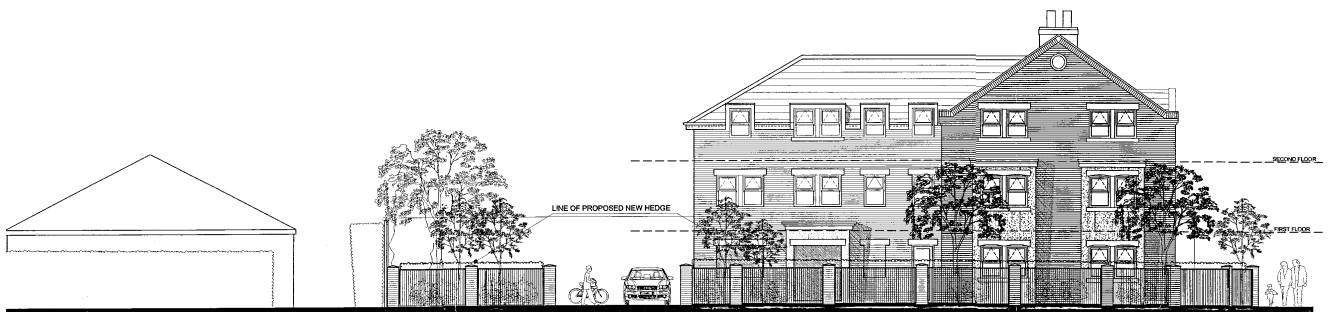
Site Layout Plan



Elevations



ELEVATION A (From Chestnut Road)

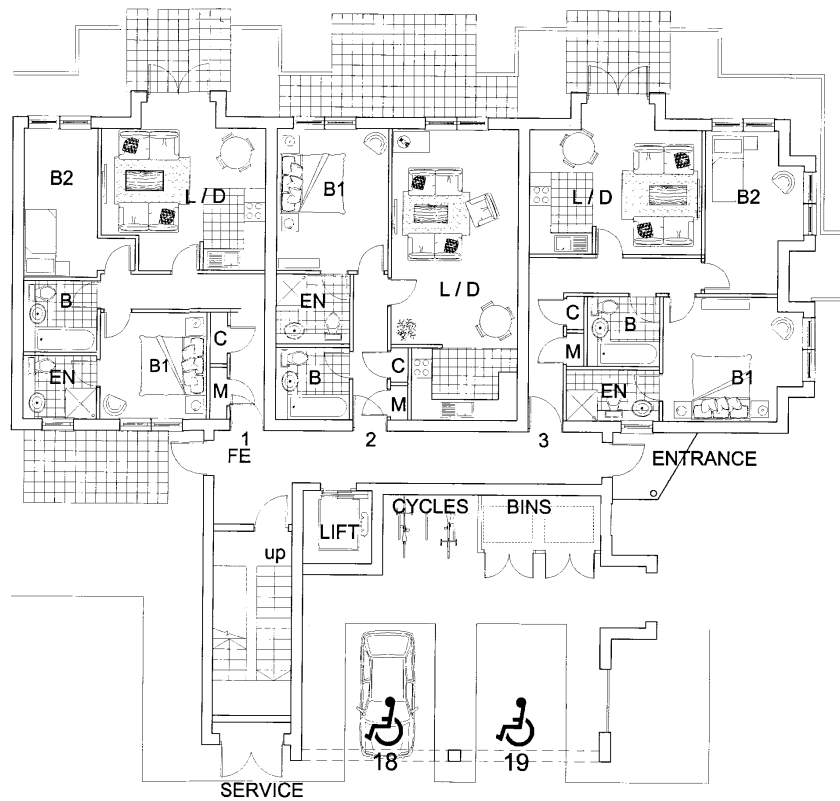


ELEVATION D (From Yarm Road)

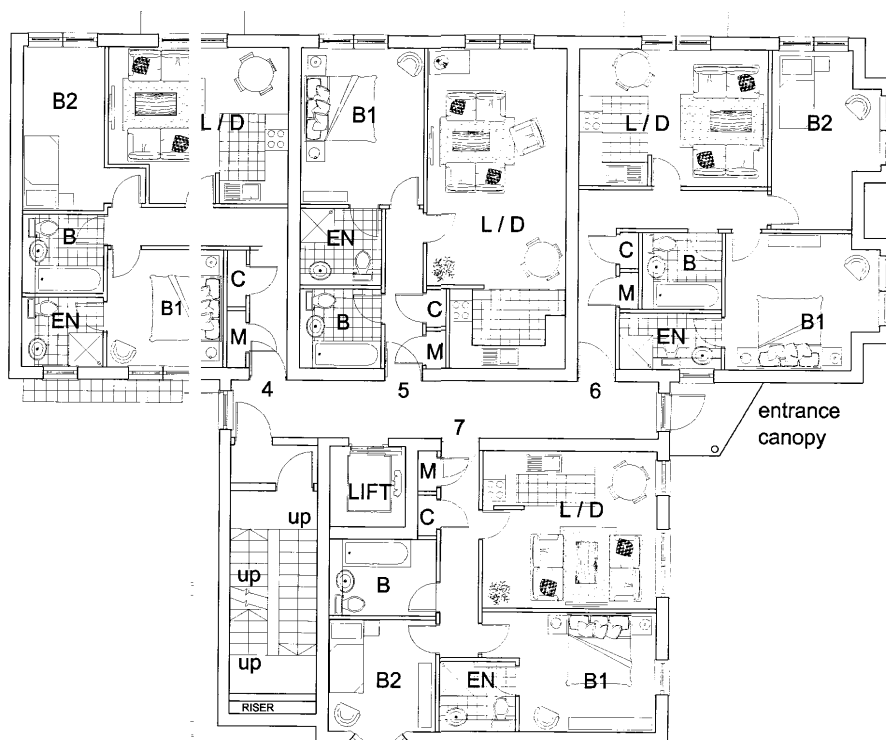


ELEVATION C

Floor Plans

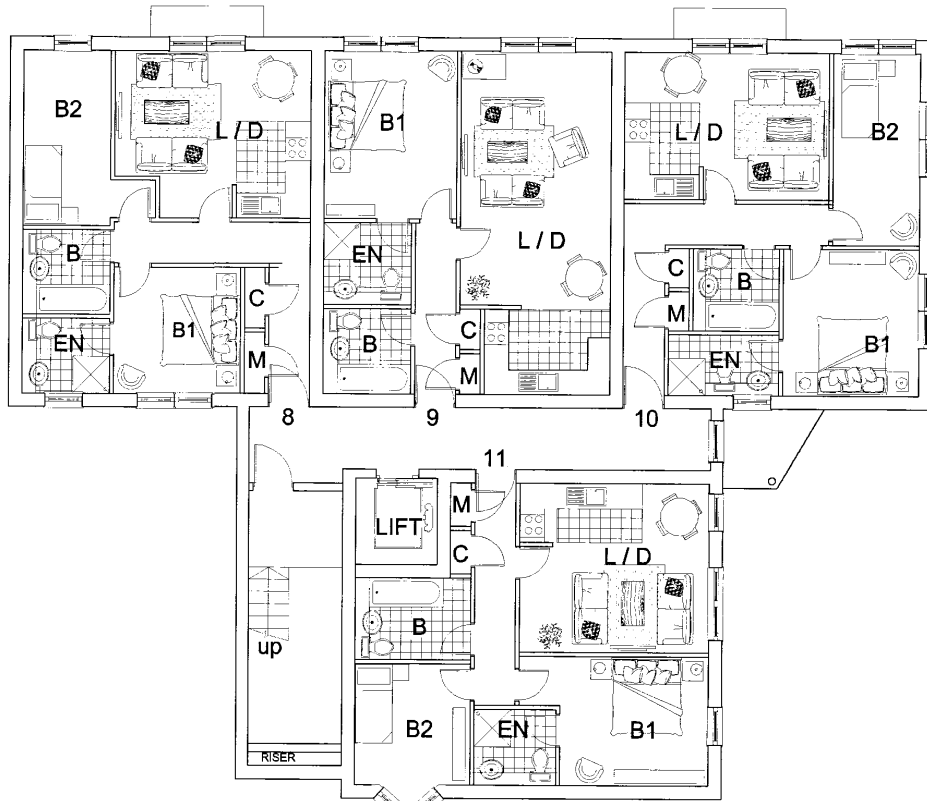


LEVEL 0



LEVEL 1

ED WINDOW LIGHT WITH OBSCURE
GLAZING-OPACITY RATING 5



LEVEL 2